

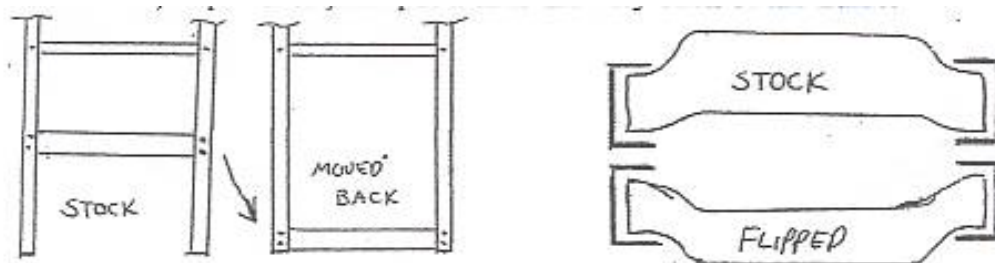
NO LIMIT

QUALITY HOT ROD PARTS
&
ENGINEERING

CUSTOM FUEL TANKS

These tanks are made to fit between the frame rails, in the rear of the truck, behind the rear axle. Most tanks will fit in with no frame mods. Some trucks have a small crossmember that was in place to balance the spare tire. This has to be removed. Installing a tank is easier with the bed off.

1. On 48-56 Fords and 55-59 Chevy's, using 21 gallon. 'A' tank. The rear crossmember must be moved back. Knock out the rivets, remove the crossmember, Flip it over, and put it in to the very back of the frame.

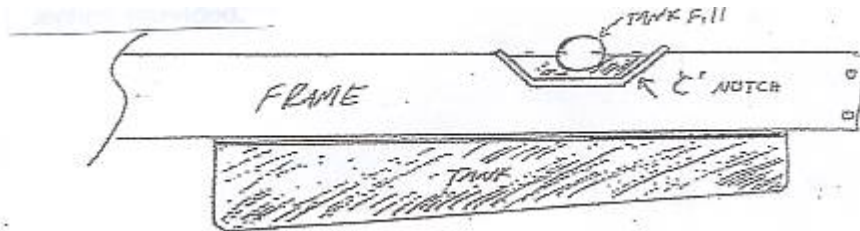


2. The tanks push up from the bottom position. Put the tank in place and use the mount straps (without nuts) to mark holes in the tank and frame. Drill holes in the tank and frame to 1/2" diameter. Put the tank back in place and bolt it in using the strap kit.





3. Some frame rails bend up away from the tank flanges. In this case use some spacers to fit in the gap. **DO NOT BEND THE TANK FLANGES TO FIT!!!** On 47'-54' Chevy's a piece of 1' x 2' wood works nice as a spacer on the back flange – Sand it to fit
4. Side fill tank will need to have a “C” section welded into the frame. Use the section provided.



5. Vent – fittings, hose, and a filter are supplied for the vent. The filter helps keep dirt and water out of the fuel.

